



# RICH/LEX NEWS

## A DISABILITIES AND SPECIAL NEEDS BOARD UPDATE



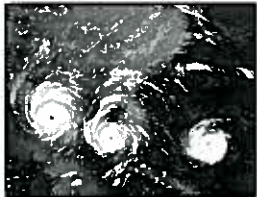
### Thank You Time Warner Cable!

Time Warner Cable chose the Greater Columbia Disabilities Foundation as the charity to sponsor for their annual golf tournament. The tournament was held at Columbia Country Club on April 14, 2008 and raised \$20,000 for the Greater Columbia Disabilities Foundation! We sincerely thank Time Warner Cable for their generous donation.

(Pictured right to left: Bob Barlow, Regional Vice President of Operations, SC Division; Paula McFadden, Foundation; Sara M. Rieger, Rich/Lex DSNB; Gregg Peterman, Director of Marketing-Special Projects.)

## Emergency and Disaster Planning

Are you ready? If we had a tornado tomorrow would you be able to meet you or your family member's **special needs**? Recent disasters have showed us planning in advance for an emergency or disaster is absolutely necessary. Have you thought about where you will go in a disaster or emergency? Do you have medication, diapers, assistive devices, or other special items you will need if you must evacuate your home? People with special needs need to take extra time to plan and to be sure to have all necessities in the event of an emergency or disaster.



### **Here are some useful websites and phone numbers to get you started:**

- Local Red Cross Disaster Line: 803-540-1215
- Richland County Emergency Services: Neil Ellis, Emergency Manager- 803-576-3400
- Lexington County Emergency Services: Michael McMasters, Emergency Manager- 803-785-8343
- Red Cross Preparing for a Disaster: <http://www.redcross.org/images/pdfs/preparedness/A4600.pdf>
- FEMA Plan Ahead: <http://www.fema.gov/plan/index.shtm>
- Red Cross Preparing for a Disaster For People with Disabilities and Special Needs: [http://www.redcross.org/services/disaster/0,1082,0\\_603\\_,00.html](http://www.redcross.org/services/disaster/0,1082,0_603_,00.html)

It is best to plan in advance for disasters by:

- ⇒ Getting informed.
- ⇒ Making a plan.
- ⇒ Assembling a disaster kit
- ⇒ Maintaining your plan and kit.

(Taken from "Preparing for a Disaster For People with Disabilities and Special Needs")

### **Remember**

It is never too early to start preparing for a disaster.  
Make it a top priority this summer!



**Board of Directors**

William D. Andress  
Chair

Robert T. Strickland  
Vice-Chair

Paula M. McFadden  
Secretary

Osmund Dixon  
Treasurer

C-Anne S. Able  
Keith W. Bates  
Cindy S. Childers  
Betty M. Connelly  
David Edmond  
Stephanie Estep  
Carrie Crawford-Washington  
Corky Dyer  
Robert J. O'Brien

Mary S. Leitner  
Executive Director

**Prevention Campaign**

The Greater Columbia Disabilities Foundation is sponsoring a prevention campaign.

Check-out our billboards throughout Richland and Lexington Counties.



**PLEASE ACCEPT OUR SINCERE APPRECIATION**

The Greater Columbia Disabilities Foundation appreciates the generosity of those who support people with disabilities and special needs.

Donations  
Mr. Robert Wiley and Family  
*In honor of* Reverend Michael R. Sherman

**New Consumer Orientation**

If you are new to the DDSN system join us for an orientation.

- Topics will include:
- \* Services provided by the Rich/Lex DSN Board
  - \* Medicaid Waivers

When: August 20, 2008  
Time: 12:00pm and 6:00pm.  
Where: Rich/Lex DSN Board

Please RSVP to Sara M. Rieger at 252-5179 ext. 392

**BABCOCK CENTER**

**Provider Fair**

Babcock Center, Inc. supports the rights of individuals with life-long disabilities to make informed choices regarding their services. In an effort to further the ability of consumers and their families to make these choices, Babcock Center will be hosting a provider fair. This fair will be an excellent opportunity for individuals and their families to preview the services that are available within the community and speak with agency representatives.

Tuesday June 24, 2008

9am-12pm

Mary L. Duffie Building

2725 Banny Jones Avenue

West Columbia, SC 29170

Please Contact for More Information:  
Kristy Harmon 799-1970, Ext 124

**TEFRA**

Parents who believe they do not meet the income limits for Parents for Healthy Children may be eligible for the Tax Equity and Fiscal Responsibility Act of 1982 (TEFRA). TEFRA is the same health insurance package as Medicaid. If your child has a disability and lives at home with you, he/she may be eligible for TEFRA if the following criteria are met:

- Your child has a disability
- Your child meets institutional level of care.
- You are caring for your child at home.
- Your child is 18 or younger.
- Your child's income and resources are low.

TEFRA is based only on the child's income, not the income of the parent. For information on how to apply for TEFRA call the South Carolina Department of Health and Human Services at 1-888-594-0820.

**Greater Columbia Disabilities Foundation**



**Foundation Updates**

The Greater Columbia Disabilities Foundation exists to provide support to people with disabilities and special needs served by the Richland/Lexington Disabilities and Special Needs Board. In the past two years the foundation has been able to sponsor for a disabilities prevention campaign, provide developmentally appropriate toys for Step Ahead (our EI program), fund respite services and summer supports. Are you interested in supporting people with disabilities? If so, we have provided an addressed envelope for your convenience. The foundation is a 501 (c) 3 non-profit and your donation is tax deductible. Please make checks payable to the Greater Columbia Disabilities Foundation. Thank you for your support of people served by the Rich/Lex DSN Board and the Greater Columbia Disabilities Foundation! Your donation makes a difference.

**New Work Activity Center Option**

There is a new workshop option for people living in the greater Columbia area. The Chesterfield Board of DSN will open Chesco Midlands Work Activity Center in Elgin mid June/early July. They will open registration to people living in residential homes first, and if there are any slots left they will open it up to people living in the community. If you are interested in finding out more about this workshop please call Crystal Wright at 803-788-6272.

**Fourth Annual Golf Tournament**



Mark your calendars for this year's golf tournament at Golden Hills Golf and Country Club on October 9, 2008, starting at 9:00am. All money raised will help support people served by the Rich/Lex DSN Board. To sign up your golf team, receive information on sponsorship, or how to contribute please call Sara M. Rieger at 252-5179 ext. 392. We need your help to make this another successful event!

**ALL MEDICAL**

"Offering A Complete Line Of Durable Medical Equipment"



- Wheelchairs & Scooters
- Custom Rehab Equipment
- Ramps & Lifts
- Respiratory Equipment
- Orthotics
- Urological Supplies
- Incontinent Supplies



**Call Today!**  
**803-779-2011**

2011 HAMPTON STREET, COLUMBIA, SC 29204

# The Back Page

## Help Wanted



Caring, compassionate, and loving people needed to provide short term and/or long term care for people with disabilities. If you or someone you know is interested please contact:

**Terell Simpkins**  
252-5179 ext. 400



Don't forget to wear sunscreen and protect your skin this summer in the hot South Carolina sun!

## Rich/Lex DSNB is located at:

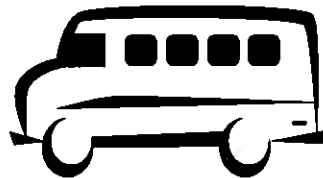
420 Rivermont Dr.  
Columbia, SC 29210

Our Phone and Fax:  
802-252-5179  
803-252-5981(fax)

Our website:  
<http://www.rldsn.org/>

## Volunteers Needed

Northeast Wheels is a transportation program serving people with disabilities and the elderly without access to transportation in the northeast part of Columbia. They are in need of volunteer drivers, coordinators, administrators, and fundraisers. If you



or someone you know is interested in being part of this new program please contact Roger Cranford, Wheels Coordinator, at 803-779-1971 ext. 17. Thank you for giving back to your community!

PRSRT STD  
U.S. POSTAGE  
PAID  
COLUMBIA SC  
PERMIT 365

Richland/Lexington Disabilities and Special Needs Board  
420 Rivermont Drive  
Columbia, SC 29210

